

ESSEX COUNTY PARKS, RECREATION AND CULTURAL AFFAIRS

LET'S

PLAY!

**YOUR GUIDE TO EVENTS,
ACTIVITIES AND FACILITIES
OF THE ESSEX COUNTY
PARKS SYSTEM**

Spring / Summer 2015



Joseph N. DiVincenzo, Jr.
Essex County Executive
and the Board of Chosen Freeholders



**Essex County Parks,
Recreation And Cultural Affairs**

www.EssexCountyNJ.org

PUTTING **ESSEX COUNTY** FIRST

CONTENTS

Upcoming Events	4
Kip's Castle Park	7
South Mountain Recreation Complex	8
Golf	13
Environmental Center	16
Essex County Gardens	17
Cultural Affairs	18
Directory of Park Conservancies	19
Parks Map	20

The activities included in this catalog take place at facilities of the Essex County Parks System.

A MESSAGE FROM THE COUNTY PARKS DIRECTOR

The Essex County Park System is full of great things to do! Let our Spring/Summer catalog be your guide to all of the free and low-cost programs available. Kick off the return of warmer temperatures with a walk around our recently completed Lenape Trail Two Mile Walking path in Branch Brook Park. Here, an ambitious tree planting campaign is underway that will bring our historic collection of cherry trees to 5,000. The Essex County Cherry Blossom Festival, outlined on page 5, offers a variety of programs for all ages to enjoy this jewel of the park system.

Be sure to set aside time this season to visit the South Mountain Recreation Complex. We are offering expanded programming at the education center. The "In Your Backyard" series focuses on teaching children and families how to discover and observe the animals and environment in their own backyards. Walk and talk programs led by our animal keepers will travel around the nearby Orange Reservoir as part of these new programmatic offerings. To accommodate the warmer days and busy crowds, we've also extended our operating hours at Turtle Back Zoo this summer to 8pm on Wednesday and Thursday evenings beginning in the final week of June. On Wednesdays, you can make a night of it, visit the zoo, grab some dinner and bring a lawn chair to catch a movie from the top of our brand new parking deck as part of the Zoo-vies!

From our trails and reservations to our golf courses and facilities, the Essex County Park System has something for everyone. On behalf of our park system staff, we hope you enjoy the 2015 season!



Daniel Salvante

*Director, Essex County Parks,
Recreation and Cultural Affairs*

MEMORIES GROW IN OUR PARKS!

Board of Chosen Freeholders

Britnee N. Timberlake
Freeholder President

Brendan W. Gill
Freeholder Vice President

Rolando Bobadilla
Rufus I. Johnson
Lebby C. Jones
Leonard M. Luciano
Wayne L. Richardson
Patricia Sebold
Cynthia D. Toro

Department of Parks, Recreation and Cultural Affairs

115 Clifton Avenue
Newark, NJ 07104
973-268-3500

PUTTING **ESSEX COUNTY** FIRST



A MESSAGE FROM THE COUNTY EXECUTIVE

The Essex County Parks System is a treasured natural resource where residents of all ages and backgrounds find joy in activities, beautiful gardens, and often, a glimpse into our past. We will continue our efforts to transform our parks to meet today's changing needs and yet preserve and celebrate our history for future generations.

You have many choices when you visit our ever-evolving Essex County South Mountain Recreation Complex ~ you can learn about animals at Turtle Back Zoo, skate at the Codey Arena, even ride a paddle boat on, or jog around a 1.8 mile trail, at the Orange Reservoir. You can test your balance at the Treetop Adventure Course and your putting skills on the course at the miniGOLF Safari ~ or bring a picnic to the Clipper Pavilion, and watch the children play at the Regatta Children's Playground.

The New York skyline, viewed from Essex County Eagle Rock Reservation has always been an extraordinary sight, and now, flanked by our 9/11 Memorial, which pays tribute to the men and women who lost their lives and the heroes who brought others to safety, it is more meaningful than ever. Day or night, it is a special place.

In a tranquil spot overlooking Newark, the new open air pavilion on Concourse Hill in Essex County Branch Brook Park, is a good place to learn about our nation's first county park. And our Environmental Center is a good place to gain a better understanding and appreciation of nature. The nearby Passaic River, wetland area, forest of West Essex Park and Lenape Indian settlement provide dynamic learning environments for students of all ages.

There is much to see and do in every corner of our Parks System, and the activities and events outlined here will help you plan your calendar for the spring and summer. We hope you enjoy your visit and keep coming back to experience what's in your own backyard. Together, we will continue *Putting Essex County First*.



A handwritten signature in black ink that reads "Joseph DiVincenzo, Jr." in a cursive script.

Joseph N. DiVincenzo, Jr.
Essex County Executive

ESSEX COUNTY UPCOMING EVENTS

ESSEX COUNTY SENIOR CITIZEN ART SHOW

Essex County Hospital Center
204 Grove Avenue, Cedar Grove
973.239.7056 / www.essexcountynj.org

EXHIBIT DATES TO BE DETERMINED

Professional and Non-Professional artists display artworks in all genres during this annual exhibit of Essex residents over the age of 60. Creativity abounds! All are invited to visit the exhibit.

How to Participate

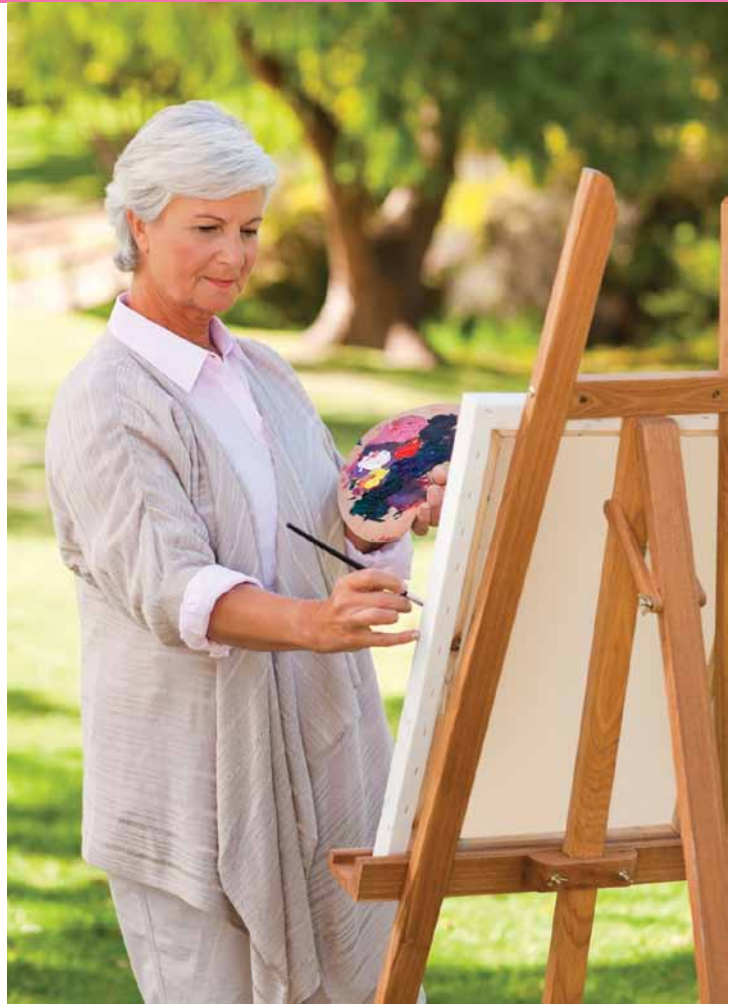
Registration is required and due to the Division of Cultural Affairs by Friday, June 5.

Any visual artist, age 60 or over, currently residing in Essex County may submit two entries completed within the past three years to the Essex County show. The show is open to amateur and professional artists.

Professional classification requires you to meet two of the following criteria: have sold artwork entered in a contest/exhibition through commercial channels, exhibited in a professional gallery, and/or hold professional membership in a guild or association.

Artwork may be submitted in any of the following categories.

- Acrylic
- Craft (No craft kits or molds will be accepted.)
- Computer imagery (Artwork created using a pixel-based painting or graphics program.)
- Drawing
- Mixed Media/Collage/Assemblage
- Oil
- Pastel (pastel, chalk, charcoal and oil pastel)
- Photography (any image created using a light-capturing device during any part of the process)
- Print
- Sculpture
- Watercolor/Gouache



ESSEX COUNTY FISHING DERBIES



Prizes will be awarded. Free to enter.

Saturday, April 18	12noon	Branch Brook Park, Prudential Concert Grove, Newark
Saturday, May 2	9am	Grover Cleveland Park, Caldwell/Essex Fells
Saturday, May 9	9am	The Waterfront, South Mountain Recreation Complex, West Orange
Thursday, May 14	6pm	Verona Park, Verona
Saturday, May 16	9am	Weequahic Park, Newark
Saturday, June 6	9am	Monte Irvin Orange Park, Orange
Saturday, June 13	9am	Irvington Park, Irvington

Children ages 15 and under are invited to the Essex County parks to test their skills in catching their own 'big fish' during one of our annual Fishing Derbies. Children are encouraged to bring their

own fishing poles. Poles are only provided to the first 150 children. Participants are encouraged to bring their own bait, chair and bucket. **Registration begins one hour before start time.**

39TH ANNUAL ESSEX COUNTY CHERRY BLOSSOM FESTIVAL



Essex County Branch Brook Park
973.268.3500
www.essexcountynj.org/festival

Saturday, April 11 to Wednesday, April 22

The County of Essex holds a historic collection of Japanese cherry trees within Essex County Branch Brook Park, Newark. More than 4,000 trees will bloom from mid to late April, creating a pink and white setting that is perfect for picnics and photos. The planting of 1,000 additional trees will bring our total to 5,000! Celebrate the arrival of spring by joining in our week-long festival of events or just take a stroll through the groves on a sunny day. The park is open to the public from dawn to dusk. Festival details are as follows:

Guided Historic Tours

Wednesday, April 15 to Wednesday, April 22
(No Tours on Sunday, April 19)
11am, 12noon, and 1pm

Have our knowledgeable guides take you on a 45-minute journey, pointing out 119 years of history hidden within Branch Brook Park's structure and design, under a canopy of cherry blossoms. Tours leave from the Essex County Cherry Blossom Welcome Center on the hour. Transportation around the park is provided. Tickets are \$5/person and are available for purchase at the Center on the tour date. Space is limited and available on a first come, first serve basis. For group or private tour bookings, please call 973.268.3506.

Cherry Blossom Challenge Bike Race

Saturday, April 11; 7am – 1pm

Race through the park in the Cherry Blossom Challenge, a competitive New Jersey tradition, or cheer on the cyclists while enjoying a day in the fresh spring air. Registration fees apply. Various races occur throughout the morning.

Cherry Blossom 10K Run

Sunday, April 12; 10am start

Run through the cherry tree groves in this USATF-sanctioned race that benefits Special Olympics of NJ. Prizes awarded by age category. Same day registration begins at 8am. Online registration at www.compuscore.com.

Family Day & 1-Mile Fun Run/Walk

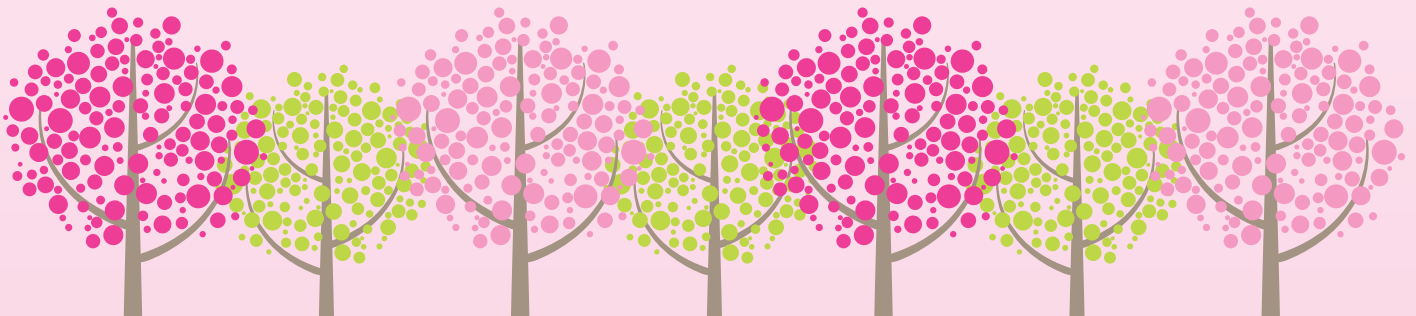
Saturday, April 18;
10am, 1-Mile Fun Run/Walk; 11am-3pm, Family Day

The celebration continues at the Prudential Concert Grove with live performances, children's activities, a fishing derby and more! The 1-Mile Fun Run/Walk is free in which to participate and precedes the Family Day activities. Schools and groups must register in advance with Caitlin Sharp at 973.268.3500.

Bloomfest!

Sunday, April 19; 11am – 5pm

Enjoy a family day in the pink park! A packed schedule of events includes cultural demonstrations, children's activities, live music, food, and more! Free admission.



ESSEX COUNTY BRANCH BROOK PARK

ESSEX COUNTY CHERRY BLOSSOM FESTIVAL
APRIL 11-22, 2015

2015 ESSEX COUNTY FREE SUMMERMUSIC CONCERT SERIES

The 2015 Essex County Free SummerMusic Concert Series offers a diverse lineup of performers taking center stage throughout our historic Parks System. Pack a blanket, enjoy the cool evening breeze, and dance to the sounds of summer! Check www.essexcountynj.org for an updated list of performers in May 2015.

Essex County Brookdale Park

- All performances begin at 7:30pm
- Wednesday, July 1 (Rain date July 2)*
- Friday, July 10
- Friday, July 17
- Friday, July 24
- Friday, July 31
- Friday, August 7

Fireworks Celebrations

New Jersey Symphony Orchestra & Fireworks

- Friday, June 26 at 7:30pm
- Essex County Branch Brook Park, Newark

Concert & Fireworks

- Tuesday, June 30 at 7:30pm
- Essex County Weequahic Park, Newark

Concert & Fireworks

- Wednesday, July 1 (Rain date: Thursday, July 2) at 7:30pm
- Essex County Brookdale Park, Bloomfield/Montclair

Festivals

Gospel Festival

- Saturday, June 20; 12pm to 5pm
- Essex County Weequahic Park, Newark

Caribbean Festival

- Saturday, August 8; 11am to 8pm
- Essex County Monte Irvin Orange Park, Orange

Old School Music Festival

- Saturday, August 15; 11am to 8pm
- Essex County Monte Irvin Orange Park, Orange

Essex County's Talent Showcase

- Sunday, August 23; 2pm to 8pm
- Essex County Monte Irvin Orange Park, Orange

Mike Griot Presents the Sixth Annual South Mountain International Blues Festival

- Sunday, September 13; 11am to 8pm
- Essex County South Mountain Reservation, West Orange

Essex County Courthouse Complex Veterans Courthouse

Music in May

- 50 West Market Street, Newark, NJ
- Wednesdays, May 6, 13, 20, & 27; 12:15pm

Visit the Essex County Veterans Courthouse at lunchtime this spring for the "Music in May" lunchtime concert series. Take a break and listen to some of the area's most talented musicians. Performance dates will be posted in the spring on www.essexcountynj.org. Free!

LIVE AT YOUR LOCAL ESSEX COUNTY PARK

ALL PERFORMANCES BEGIN AT 7PM

- Wednesday, June 24 Essex County Veterans Memorial Park, Newark
- Thursday, June 25 Essex County Yanticaw Park, Nutley
- Tuesday, July 7 Essex County Independence Park, Newark
- Wednesday, July 8 Essex County Irvington Park, Irvington
- Tuesday, July 14 Essex County Monte Irvin Orange Park, Orange
- Wednesday, July 15 Essex County Riverbank Park, Newark
- Thursday, July 16 Essex County Weequahic Park, Newark
- Tuesday, July 21 Essex County Kip's Castle Park, Verona
- Wednesday, July 22 Essex County West Side Park, Newark
- Tuesday, July 28 Essex County South Mountain Recreation Complex, West Orange
- Wednesday, July 29 Essex County Watsessing Park, Bloomfield/East Orange
- Tuesday, August 4 Essex County Grover Cleveland Park, Caldwell/Essex Fells
- Wednesday, August 5 Essex County Ivy Hill Park, Newark
- Tuesday, August 11 Essex County Vailsburg Park, Newark
- Wednesday, August 12 Essex County Riverfront, Newark
- Friday, August 14 Essex County Eagle Rock Reservation, West Orange

Essex County Kip's Castle Park

**22 Crestmont Road, Verona, NJ
973.239.2465**

Essex County Kip's Castle Park features a 9,000-square-foot mansion built to resemble a medieval Norman castle. The grounds span 11 acres of land on the ridge of First Mountain, resting in both Montclair and Verona townships, and provide spectacular views of New York City.

Operating Hours

**Park grounds are open dawn to dusk all year.
Kip's Castle is closed for renovations until Fall 2015.**

Free Friday Flicks: An Outdoor Movie Series

See some of your favorite films in one of our most magnificent venues! Screenings begin at dusk. Arrive early for some pre-movie entertainment! *Free admission.* Concessions for sale.

Frozen [PG]

Friday, June 5. Rain Date: Saturday, June 6

After the kingdom of Arendelle is cast into eternal winter by the powerful Snow Queen Elsa (voice of Idina Menzel), her sprightly sister Anna (Kristen Bell) teams up with a rough-hewn mountaineer named Kristoff (Jonathan Groff) and his trusty reindeer Sven to break the icy spell.

The Lego Movie [PG]

Friday, June 12. Rain Date: Saturday, June 13

A lowly Lego figure (voiced by Chris Pratt) joins a group intent on battling an evil force after a case of mistaken identity in this computer-generated comedy.

Divergent [PG-13]

Friday, June 19. Rain Date: Saturday, June 20

In a world where the population is divided into factions by personality types, Tris Prior (Shailene Woodley) is classified as Divergent. When she uncovers a conspiracy to eliminate all Divergents, she teams with the mysterious Four (Theo James) to find out what makes the powers-that-be so frightened of them.

Eat, Pray, Love [PG-13]

Friday, June 26. Rain Date: Saturday, June 27.

Liz Gilbert had everything a modern woman is supposed to dream of having - a husband, a house, a successful career - yet like so many others, she found herself lost, confused and searching for what she really wanted in life. Newly divorced and at a crossroads, Gilbert steps out of her comfort zone, risking everything to change her life, embarking on a journey around the world that becomes a quest for self-discovery.

SummerMusic Concert: An Evening of Doo-Wop

Tuesday, July 21 at 7pm

Free admission.
Set your chairs under the stars and experience an evening of oldies.



If you would like to schedule a wedding ceremony or special event at Essex County Kip's Castle Park, please contact Lisa Payne, Event Coordinator, at 973.268.3500.



ESSEX COUNTY SOUTH MOUNTAIN RECREATION COMPLEX



Essex County Treetop Adventure Course

**560 Northfield Avenue
West Orange, NJ
973.731.5800 ext. 0**

Our Adult Courses (approximately 35 feet in height) offer 30 unique challenge elements with an average run time of 1 to 1.5 hours. Our Junior Courses (approximately 10 feet in height) offer 18 unique challenge elements with an average run time of 30 to 45 minutes. Parents/Guardians may join their children on the Junior Course for the same fee. The redesigned Zip Line measures over a football field in length and stands at approximately 40 feet. Please visit our website for additional rules and reservation details.

Hours of Operation

Opens mid-March

Spring Saturdays and Sundays
Summer Daily
10:00am - Dusk ****last admission is one hour before sunset**

Rates

Advanced registration is required.

Adult Course	\$27. Minimum Height: 54 inches. Maximum Weight: 250 lbs.
Junior Course	\$17. Minimum Age: 6. Maximum Weight: 250lbs.
Zip Line	\$12. Minimum Age: 6. Minimum Weight: 60 lbs. Maximum Weight: 250 lbs.

Adult Course
and Zip Line \$32

For special events and large groups, please call 973.731.5800 ext. 0

Essex County miniGolf Safari

**9 Cherry Lane
West Orange, NJ
862.520.5024**

Essex County Safari MiniGolf is an award-winning, 19-hole course. Experience the landscape and wildlife of Africa as you putt around the Sahara Desert, the grasslands, and Congo all as you putt around a life size gorilla, hippo and many other native African species.

Hours of Operation

Summer	Monday-Thursday	10am-8pm
	Friday-Sunday	10am-9pm

Rates

Adults	\$10	Children/Seniors	\$8
--------	------	------------------	-----

For special events and party rentals, please call 862.520.5024



Essex County Waterfront

7 Cherry Lane
West Orange, NJ
973.232.5148

The Essex County Paddle Boating Pavilion and Waterway Experience provides guests with breathtaking views of Essex County South Mountain Reservation as well as a unique recreation experience. Guests can sit and take in the lakeside viewing or rent a paddle boat and traverse the serene waterway.

Hours of Operation Opens mid-March

Spring	Saturdays and Sundays
Summer	Daily
10:00am - Dusk	**last admission is one hour before sunset

Padde Boat Rental Rates

2 person boat rental	\$14/ 30 mins.
4 person boat rental	\$18/ 30 mins.
2 person Orange Township Resident Rental	\$7/ 30 mins.

If you would like to schedule a rental of the Clipper Picnic Pavilion, please contact the Permit Unit at 973.735.6229.

Essex County Turtle Back Zoo

560 Northfield Avenue
West Orange, NJ
973.731.5800
www.turtlebackzoo.com

Essex County Turtle Back Zoo is committed to providing an enriching recreational experience that fosters excellence in education and conservation, so that present and future generations are inspired to understand, appreciate and protect the fragile interdependence of all living things.

Hours of Operation

Through March 31: Daily 10am – 3:30pm
April 1 – October 31:
Monday through Saturday: 10am – 4:30pm; Sunday: 11am – 5:30pm

Rates April 1-October 31

	Off Season (through March 31)	April 1-October
Adults	\$11.00	\$13.00
Children	\$8.00	\$9.00
Seniors 62+	\$8.00	\$9.00
Children 23 months and under	Free	Free
Rental Safari Double Strollers	\$7.00	\$7.00



**Essex County Turtle Back Zoo
Special Events**

World Story Telling Day

Saturday, March 21; 11am - 3pm

Stories bring generations together, share valuable lessons, entertain and engage. Storytellers will share tales of animals from around the world throughout the day in various locations in the zoo.

Bear Awareness Day

Saturday, May 16; 11am - 4pm

Visit Turtle Back Zoo's resident black bears to learn more about co-existing with bears and about some of their endangered wild relatives. Keeper talks plus activity and information stations make this day educational and fun.

2015 Essex County Open House

Saturday, May 30; 10am - 2pm

The carnival-like event combines games and activities to entertain and provide information to raise public awareness about the programs and services provided by Essex County.

Turtle Back Zoo admission and rides on the miniature train are free. Admission to the miniGOLF Safari is \$8 for children and \$10 for adults. Carousel and Pony rides are \$2 each. Feed sticks at the Outback Adventure Aviary are \$2. Fees also apply at the Treetop Adventure Course and Paddle Boating on the Orange Reservoir. 973.731.5800 / www.essexcountynj.org

Memorial Day Sheep Sheering

Monday, May 25; 11am - 4 pm

Celebrate Memorial Day with a trip to the Zoo. Stop by the farm to observe as our sheep are sheered. Learn more about wool and its uses.



**NIGHT
MOVES**

Join us for a guided tour of some of the zoo exhibits at night. Learn about animal senses and adaptations. Tour times vary by date. Please call 973.731.5800 ext.275 to confirm.

Organized Groups
Thursday, August 20; Friday, September 25
Pre-registration and payment in advance is required.
Cost is \$7.00 per person.

Public Sessions
Friday, May 22; Thursday, July 16
Friday, August 14; Friday, September 11
Pre-registration and payment in advance is required.
Cost is \$7.00 per person.

**Essex County
Open House
Saturday, May 30
10am - 2pm**



Native Animal Day

Saturday, July 11; 11am-4pm

North American animals are the stars of the day. From bison to bog turtles, we will be celebrating all over the zoo with special keeper talks, animal enrichments and activities for folks of all ages.

National Zoo Keepers Week

Sunday, July 19 – Monday, July 25

Check website for schedule of events

Celebrate the people who care for our animals every day of the year. Learn about careers in zoos and come to one of our daily keeper talks to meet them in person. Share your “kudos for a keeper” on www.facebook.com/TurtleBackZoo.

Big Cat Day (World Lion Day)

Saturday, August 8; 11am-4pm

ROAR! for the big cats, including some of the most highly endangered animals on the planet. Bring the pride in for keeper talks and special enrichments.

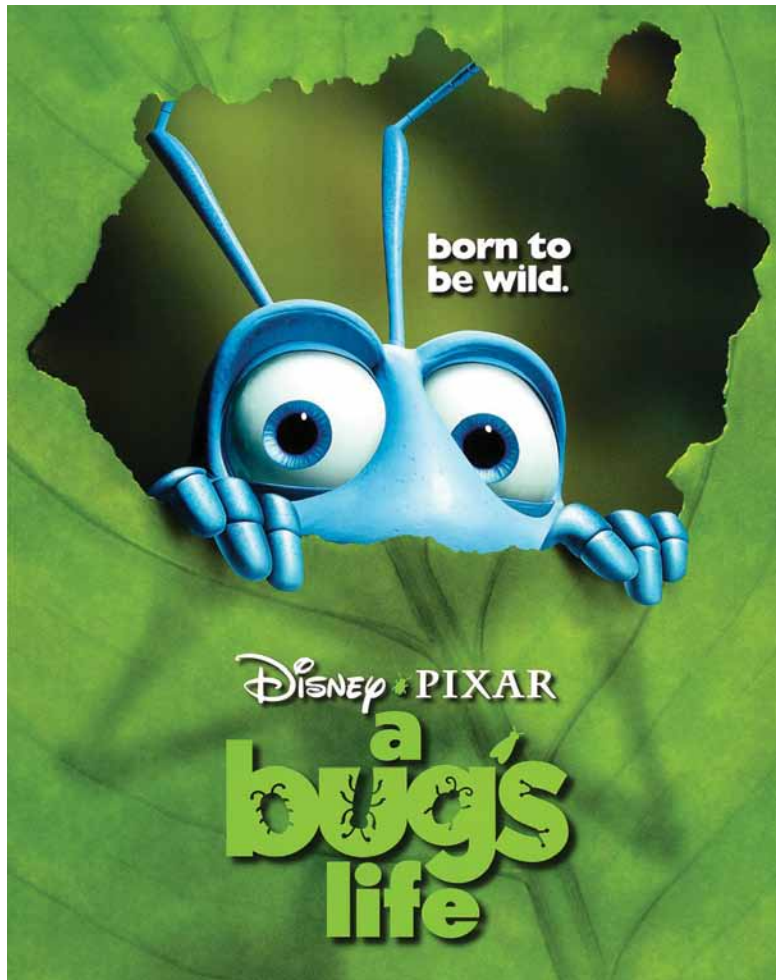
Family Fun Night

June 24 & 25

July 1 & 2, 8 & 9, 15 & 16, 22 & 23, 29 & 30

August 5 & 6, 12 & 13, 19 & 20, 26 & 27

Turtle Back Zoo has extended hours to 8:30pm on Wednesdays and Thursdays from June 24 to August 27! Come on out when the temperatures are cooler and the work day is over. Last admission at 8pm.



ZOO-VIES!

Wednesdays this Summer!

Come for the zoo on any of our Family Fun Nights and stay for the Zoo-vies! Movies under the stars on the roof-top of our brand new parking deck. Bring your own lawn chair. Free admission. Refreshments for sale. Rain cancels. Film schedule is subject to change without notice. Films begin at dusk.

- June 24: Dolphin Tale 2
- July 1: Into the Woods
- July 8: Yogi Bear
- July 13: The Lorax
- July 22: ET
- July 29: 101 Dalmations
- August 5: Jurassic Park
- August 12: Madagascar
- August 19: Curious George
- August 26: A Bug's Life

NEW FOR 2015!

Essex County Codey Arena

**560 Northfield Avenue
West Orange, NJ
973.731.3828**

The arena is open to the public for ice skating, group skating lessons, learn to speedskate lessons, private skating parties, along with figure skating and ice hockey camps. Many ice skating competitions including the Figure Skating Winter ESCapade, the New Jersey State High School hockey state games, the Essex County Winter Holiday Hockey Tournament and many other skating events are hosted at the arena. Some non-ice events the arena has hosted include the Essex County Wrestling Tournament, ESPN Friday Night Fights, the Wounded Warrior/NFL Alumni Football game, and the ATU National Taekwondo Championships.

Hours of Operation

Open Daily 5:30am – 11:30pm
Call ahead or check the arena schedule at www.essexcountynj.org for public skating sessions and freestyle skating times.

Public Skating Rates

Adults	\$8.00
Children	\$6.00
Seniors	\$6.00
Skate rentals	\$4.00
Freestyle	\$14.00 hour session
Private Ice Rentals	\$400.00 hour
Party Room	\$100 for three hours

For additional information or if you would like to schedule a birthday party, group outing or private rental, call the arena front office at 973.731.3828.

Learn to Skate

The Learn to Skate program introduces skaters to the basic skills of ice skating. Classes are offered during the fall, winter, spring and summer seasons for six, seven or eight weeks. For registration and schedule information, please call 973.731.3828 ext. 223.

Learn to SpeedSkate

The Learn to Speedskate program will introduce skaters to the basic skills of speedskating. Classes will be offered throughout the year. For information, please call 973.731.3828 ext. 223.

UPCOMING EVENTS

- | | |
|------------------------|--|
| March 12-15 | Devils Youth Shamrock Tournament |
| June 29-July 31 | Summer Figure Skating Camp |
| July 6-10 | Pro Ambitions Hockey School |
| July 13-17 | Great Saves Goaltending Camp |
| July 13 – 17 | D1 Development Hockey Skills Camp |
| July 20-24 | Erik Nates Euro Hockey School |
| July 27-31 | Great Saves Goaltending Camp |



Essex County Golf

The Department of Parks has long been at the forefront of efforts to provide exposure to, and broaden the understanding and enjoyment of the sport of golf. We provide unique opportunities for both male and female golfers of all ages and abilities. Our mission is to make golf an affordable and accessible sport to anyone who wishes to play.

Our schedule introduces anyone and everyone to the sport of golf in an educational, recreational, instructional and competitive environment, or any combination of these needs. All the participant need bring is an interest in the sport of golf.

General Golf Information

The County of Essex requires each golfer to enroll with the County prior to using the automated tee time system. You may enroll in person at all three golf courses Monday thru Friday from 8:30am to 4:00pm and on Saturday from 8:30am to 12:00pm.

New registrations

The County will accept only a valid New Jersey Driver's License with current address and one current utility bill (Telephone, PSE&G or Cable only) with the applicant's name on it. If bills are in a spouse's name, the applicant must show a copy of a marriage certificate. We will also accept Passports with an Essex County address.

Renewals

Golfers must provide proof of residency annually when renewing their Golf ID card. Proof of residency is a valid New Jersey Driver's License and a current utility bill (Telephone, PSE&G or Cable only) with the applicant's name on it. If bills are in a spouse's name, the applicant must show a copy of a marriage certificate.

Golf Cards

There are eight (8) types of Essex County Golf Cards:

Adult Resident	\$45.00	Gold \$85.00
Senior/Junior	\$25.00	Gold \$60.00
Senior Seasonal (80 rounds)	\$500.00	
Junior Seasonal	\$75.00	
Disabled Resident	\$25.00	
Weequahic Non-Resident Hendricks Field & Weequahic Non-Resident	\$69.00	Gold \$99.00
Hendricks, Weequahic & Byrne Non -Resident	\$109.00	Gold \$139.00
	\$139.00	Gold \$169.00

A Gold Card enables golfers to make reservations 10 days in advance, enrolls the golfer into the New Jersey Golf Association e-benefits program and enrolls the golfer into the Golf Handicapping Information System.

GOLF COURSE OPENING DATES

Date	Doors Open	First Tee Off Time	Register Close
March 6	7:30am all days	8:00am All days	1 ½ hour before sunset
Season Time Change			
March 20	7:00am all days	7:30am all days	1 ½ hour before sunset
April 3	6:30am all days	7:00am all days	1 ½ hour before sunset
April 17	6:00am all days	6:30am all days	1 ½ hour before sunset
May 1	5:30am all days	6:00am all days	1 ½ hour before sunset
August 7	6:00am all days	6:30am all days	1 ½ hour before sunset
September 11	6:30am all days	7:00am all days	1 ½ hour before sunset
September 25	7:00am all days	7:30am all days	1 ½ hour before sunset
October 16	7:30am all days	8:00am all days	1 ½ hour before sunset



ESSEX COUNTY GOLF

Group Golf

The Group Golf program is for all groups interested in an 18-hole event with 20 golfers or more. Open to all organizations. Limited dates, courses and times available. Please call the Director of Golf Operations 973.302.4587 to schedule available times at select course.

Junior Golf

Essex County Parks Department feels it is important to grow the game of golf and we believe there is no better place to start than with the Junior Golfers. We have special Junior golf rates and have developed a relationship with The First Tee program promoting leadership initiatives and positive life skills in our community's youth. Children between 11 years of age and 16 years of age are required to have a parent or guardian supervisor over the age of 18 years.

USGA Handicap System

The Department of Parks, in cooperation with the NJSGA, offers the USGA GHIN handicap program. Computers are available at all three golf courses. We encourage interested individuals to subscribe to the service for a nominal fee and receive handicap updates every two weeks.



Essex County Francis Byrne Golf Course

**Pleasant Valley Way
West Orange, NJ
973.736.2306**

Essex County's Francis Byrne Golf Course dates back to 1926, when it was designed as a private country club course by noted golf architect Charles Banks. Through a 2007 renovation project, many of the course features have been restored to their classic roots, making Byrne one of the premiere public golf destinations in the state. A number of holes are based on famous courses from Scotland, including the par five 1st hole that is modeled after the Road Hole at St. Andrews.

Among other classic holes on the Byrne Golf Course are the long par three Biarritz 2nd hole that measures well over 200 yards from the championship tee and the short 14th that is similar to the Eden hole that is also found at St. Andrews, as well as many of the best private clubs in the United States. The back nine at Byrne includes several long par four holes such as the 12th and 15th, the latter of which champion golfer Bobby Jones considered to be one of the most difficult holes in America.

This beautiful course in West Orange features deep bunkers, hilly topography and rolling greens that combine to create a wonderfully challenging layout that measures nearly 6,800 yards and offers public golfers the rare opportunity to play a course from golf's Golden Age of Design.

Green Fees	Cardholder	Non-cardholder
Adult Weekday	\$28.00	\$44.00
Adult Weekend/Holiday	\$34.00	\$51.00
Senior, Junior, Disabled-Weekday	\$19.00	\$29.00
Twilight Weekdays	\$21.00	\$26.00
Twilight Weekends/Holidays	\$24.00	\$30.00



Essex County Hendricks Field Golf Course

**220 Franklin Avenue
Belleville, NJ
973.751.0178**

Designed by architect Charles Banks, Essex County’s Hendricks Field features well contoured putting surfaces and many interesting holes. Opened in 1929, renovations at Hendricks have included the reconstruction of tees and bunkers, as well as extensive upgrades in drainage that have significantly improved playing conditions.

Hendricks has a number of classically designed holes, such as the par four 4th hole that has a cluster of Principal’s Nose bunkers in the center of the fairway that present strategic decisions, and the exacting par three 6th with a green that is almost completely surrounded by bunkers. Among the best holes on the back nine is the par five 10th where golfers must negotiate a stream that crosses the fairway to reach the green. The narrow fairways and well-guarded greens at Hendricks require both accurate and thoughtful play to add to golfers’ enjoyment at this hidden gem in Belleville.

Essex County Weequahic Park Golf Course

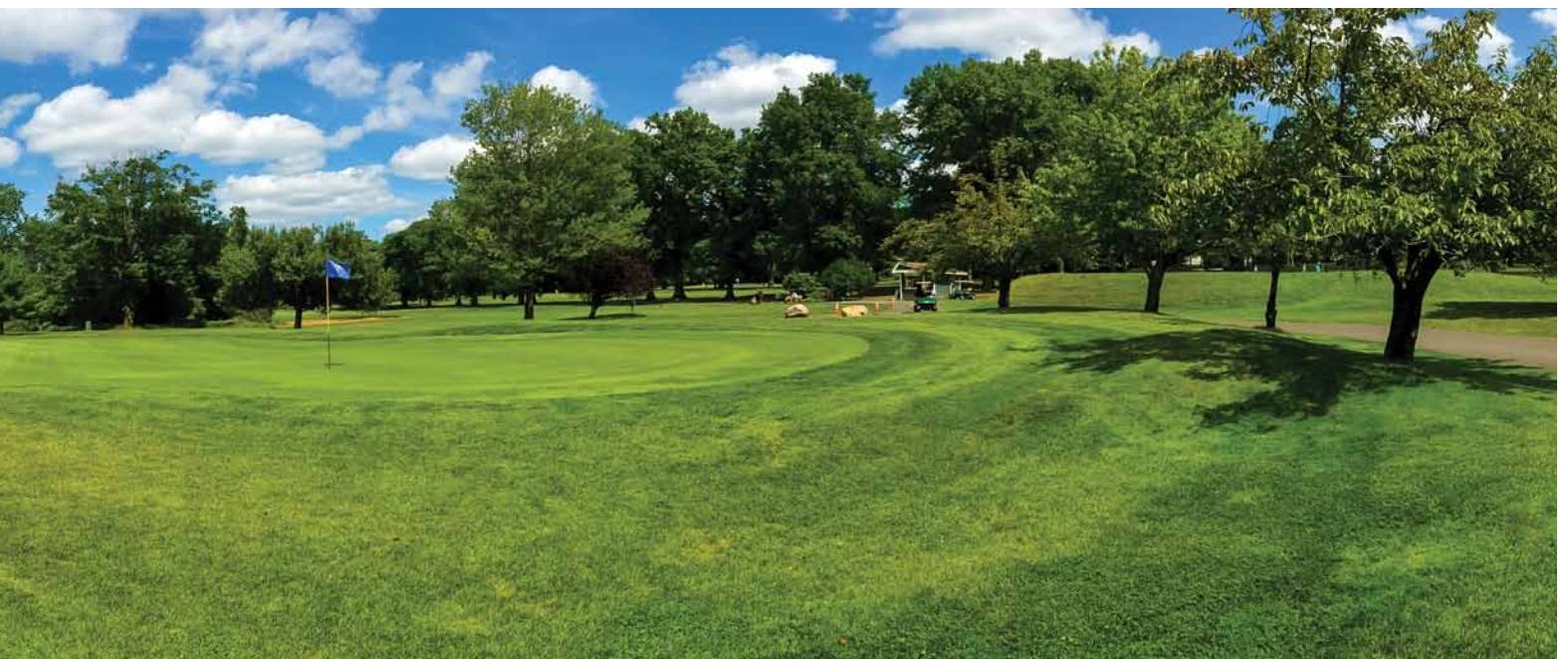
**Elizabeth and Grumman Avenues
Newark, NJ
973.926.2520**

Essex County’s Weequahic Park Golf Course is set on a beautifully rolling property. New bunkers have been added to the course through our renovations process that have greatly enhanced its strategic and visual appeal. Tucked in the corner of historic Essex County Weequahic Park, this is the first public course in New Jersey, having been designed by Baltusrol Golf Club professional George Low in 1913.

While Weequahic measures slightly less than 6,000 yards, the course offers an ideal golfing landscape and its small greens make low scoring difficult. Among the best holes on this lovely course are the uphill par five 3rd with two large bunkers carved in the hillside, as well as the long par four 16th that plays to the crest of this same hill and down to the green that is set in the base of its long slope

Green Fees	Cardholder	Non-cardholder
Adult Weekday	\$22.00	\$35.00
Adult Weekend/Holiday (Friday from Memorial-Labor Day)	\$26.00	\$45.00
Senior, Junior, Disabled- Weekday	\$16.00	\$27.00
Twilight Weekdays	\$18.00	\$22.00
Twilight Weekends/Holidays	\$21.00	\$26.00
9 Hole Weekday (after 11am)	\$16.00	\$30.00
9 Hole Weekend (after 11am)	\$19.00	\$36.00
Winter Rate (January and February)	\$18.00	\$26.00

Green Fees	Cardholder	Non-cardholder
Adult Weekday	\$22.00	\$35.00
Adult Weekend/Holiday (Friday from Memorial-Labor Day)	\$26.00	\$45.00
Senior, Junior, Disabled- Weekday	\$16.00	\$27.00
Twilight Weekdays	\$18.00	\$22.00
Twilight Weekends/Holidays	\$21.00	\$26.00
9 Hole Weekday (after 11am)	\$16.00	\$30.00
9 Hole Weekend (after 11am)	\$19.00	\$36.00
Winter Rate (January and February)	\$18.00	\$26.00



**Essex County
Environmental Center**

**621-B Eagle Rock Avenue
Roseland, NJ
973.228.8776**

The Essex County Environmental Center at West Essex Park is situated in a wooded wetland habitat with access to the Passaic River. This interesting and affordable education center offers naturalist-led field trips for school groups, scouts and community groups, as well as birthday parties for children. This state-of-the-art facility is also available for booking community/family events and corporate business outings.

The Center's environmental educational programs are carefully designed, structured and unstructured, to create opportunities for families to get outside and into the parks while having fun and learning in multiple subject areas. All Center programs encourage participants to think about environmental stewardship, natural habitats and, with this in mind, fosters an appreciation for the natural world—its parks, outdoor recreation, and ecological conservation. The Center offers nature- and science-based programming for toddlers through senior citizens, school groups, scout organizations, and the general public at-large.

Hours of Operation

Monday through Friday, 9am-5pm; Saturdays, 10am-2pm
Fees vary by program

Special Events

Spring Nature Camp

Tuesday, March 31; Wednesday, April 1 and Thursday, April 2
Or

Tuesday, April 7; Wednesday, April 8 and Thursday, April 9
12:30pm-4:30pm

1st to 5th Grades

Center Main Building and Center Campus

Fee: \$120 per child all 3 days or \$50 per child per day. Call the Center for details. Advance registration is required.



Earth Day Celebration

Saturday, April 25; 11am-4pm

Center Main Building and Garibaldi Hall

Free admission, some items may be for sale by vendors

Wilderness Skills Camp: A Traditional Approach

Monday, June 22 – Thursday, June 25; 9:30am - 1:15pm

Fee: \$175 per child

For grades 5 to 9. Join Traditional Earth Skills Instructor Mike Dennis for a week of outdoor skills building. We will track animals, create fire, go canoeing, make moccasins and natural rope, build shelters and more. Call the Center for details. Advance registration is required.

Wilderness Skills Camp: A Modern Approach

Monday, June 29 – Thursday, July 2; 9:30am - 1:15pm

Fee: \$175 per child

For grades 5 to 9. Join Traditional Earth Skills Instructor Mike Dennis for a week of various hiking and camping skills. We will be engaged in days of canoeing, plant identification, fishing, setting up emergency camps, learning first aid, creating take home projects and so much more. This is a modern approach to enjoying the great outdoors in safety and comfort. Call the Center for details. Advance registration is required.

Summer Nature Camp

Monday, July 6 - Friday, August 14

Center campus (both main building and Garibaldi side)

Two week sessions per grade level; each week a different topic; children enroll per weekly session. Call the Center for details. Advance registration is required.

Weeks 1 and 2 (July 6-17), Grades Pre-K and K, 1pm to 4pm,
\$150 per child per week

Weeks 3 and 4 (July 20-July 31), Grades 1 and 2, 1pm to 5pm,
\$170 per child per week

Weeks 5 and 6 (August 3-14), Grades 3 and 4, 1pm to 5pm,
\$190 per child per week

Butterfly Tent Safari

Saturday, July 11 – Saturday, July 25

Open tent hours Monday to Friday, 12noon-3pm; Saturday
10:30am-1:30pm

Suggested \$2 donation per person to Essex County Parks Foundation during open tent hours; fees are \$8/child and \$10/adult during special topics/Saturday programming.

Special programming on Saturdays, July 11, 18 and 25.

Center Main Building Back Deck

Essex County Presby Memorial Iris Gardens

**474 Upper Mountain Avenue
Upper Montclair, NJ
973.783.5974
www.presbyirisgardens.org**

The Essex County Presby Memorial Iris Gardens was established in 1927 to honor Frank H. Presby of Montclair, a leading horticulturalist and a founder of *The American Iris Society*. This living museum, listed on the *State and National Registers of Historic Sites*, offers a spectacular display of thousands of iris varieties to visitors from all over the world.

Hours of Operation

The Essex County Presby Memorial Iris Gardens are open from dawn to dusk 365 days a year. The peak bloom season is from mid-May to early June.

There are no admission fees. Donations are strongly encouraged during the peak bloom season.

Bloom Room Hours

The Bloom Room will be open for souvenirs and garden gifts Friday, May 8 – Sunday, May 31 from 10am to 6pm daily. Pick out a special keepsake or select a treasured gift.

Special Events

Presby Plant Sale

Friday, May 8 – Sunday, May 10; 10am-3pm

This annual plant sale offers an exciting mix of reasonable priced home and garden accents. Potted and bare root irises from the collection are available for purchase. Visitors may also reserve summer grab bags.

Family Garden Party

Saturday, May 16; 11am-3pm. Rain date: May 17

Free Admission.

Celebrate the arrival of spring among more than 100,000 blooms with a full day of family activities, entertainment and refreshments. A student art exhibit will be on display and the Bloom Room will be open for shopping.



Essex County Riker Hill Art Park

**284 Beaufort Avenue
Livingston, NJ**

Essex County Riker Hill Art Park is a former United States Army Nike Missile Tracking Base. The 42-acre complex was purchased from the federal government for one dollar in 1974. The buildings, which once housed army facilities, have been transformed into 38 artist studios. Artists-in-residence work in various disciplines such as painting, fine metal jewelry, ceramics, pottery, glass-blowing, fine prints, photography, and sculpture.

Hours of Operation

The grounds at Riker Hill Art Park are open from dawn to dusk seven days a week.

Open House and Art Sale

Saturday, June 6 & Sunday, June 7; 12 noon – 5pm

Free admission

Get an inside glimpse of the art world by attending the Essex County Riker Hill Art Park Open House. While visiting a variety of different art studios, you will have the opportunity to talk to the artists, purchase art work, and stop by the gallery to view a compilation exhibition. Artists in residence work in a variety of disciplines, including clay, jewelry, glass blowing, painting, sculpture, printmaking and photography.

Essex County Park System Archives

**115 Clifton Avenue
Newark, NJ
973.268.3500**

Developing public parks involves a complex design and construction process. The Essex County Parks Archives contain the Essex County Park Commission’s papers, some over 100 years old, documenting this process. A concerted effort to preserve the collection began in the 1990s. Since then much of the collection has been inventoried, indexed, and stored properly to preserve it for another 100 years. Several thousand maps and plans, as well as the Commission minutes and annual reports are digitized and available for viewing on a public workstation.

The collection includes:

- Commission Minutes
- Annual Reports
- Plans and Maps
- Correspondence
- Photographs
- Newsletters
- Legal Agreements
- Engineering Papers
- Financial Reports
- Planting Plans and Lists

Research requests may be initiated by phone 973.268.3500 or email (archives@parks.essexcountynj.org). The Archives are open 9am – 4pm, Monday through Friday by appointment. Records shall be handled with care. Items in the historical collection are not loaned out.

If you have a research question regarding the Essex County Park System, the Archives is a great place to start.



Becker Park Conservancy

Howard Silverberg, Chairperson
Email: njwoodlands@optonline.net
www.beckerparkconservancy.org

Brookdale Park Conservancy

Mollie Smith, Chairperson
Email:
info@brookdaleparkconservancy.org
www.brookdaleparkconservancy.org

Essex County Parks Foundation

Lou LaSalle, President
Email: jzaitz@parks.essexcountynj.org

**Eagle Rock Reservation
Conservancy**

James Christiano, Chairperson
Email: ERRC11@aol.com
www.eaglerockreservation.org

Friends of Anderson Park

Scott Kevelson, Chairperson
Email: Montclairtrees@aol.com
www.friendsofandersonpark.com

Friends of Irvington Park

Sandy Jones, Chairperson

**Grover Cleveland Park
Conservancy**

Lisa Garrity, Chairperson
Email: gpc@molink.com
www.groverclevelandpark.org

Hilltop Conservancy

Geordie Smith
Email: VicePresidentHilltopconservancy.org
www.hilltopconservancy.org

**Ivy Hill Neighborhood
Association**

Houston Stevens, Chairperson
Email: Houston.stevens1@verizon.net
www.ihnnewark.org

Kip's Castle Park Conservancy

Jim Robbins, Chairperson
Email: jhr1064@gmail.com
www.kipscastle.org

**Presby Memorial Iris Gardens
Citizens Committee**

Nancy Skjei-Lawes, Chairperson
Email: info@presbyirisgardens.com
www.presbyirisgardens.com

South Mountain Conservancy

Dennis Percher, Chairperson
Email: info@somocon.org
www.somocon.org

**SPARK: Friends of
Riverbank Park**

Nancy Zak, Chairperson
Email: Spark07105@yahoo.com
www.riverbankpark.org

Verona Park Conservancy

Jim McGregor, Chairperson
Email: jmcgrgr@verizon.net
www.veronapark.org

Watsessing Park Conservancy

Doreen Sarcone, Chairperson
<http://wpcessex.blogspot.com/>

Weequahic Park Association

Wilbur McNeal

Weequahic Sports Authority

Douglas Freeman, President

West Essex Park Conservancy

Ronald Pate, Chairperson
www.wpec.us

West Side Park Conservancy

Sheila Pitts, Chairperson
Email: pitts.sheila@att.net

Zoological Society of NJ

Adam Kerins, Executive Director
Email: ajkerins@gmail.com
www.turtlebackzoo.com





Parks, Recreation and Cultural Affairs Office

115 Clifton Avenue
Newark
Phone: (973) 268-3500

PARKS

Anderson Park

Bellevue Ave. & N. Mountain Ave.
Montclair

Becker Park

Locust Ave., Roseland

Belleville Park

Belleville Ave.
Belleville

Branch Brook Park

Park Ave. & Lake Street
Newark
Clifton Ave.
Newark

Brookdale Park

Watchung Ave., Bloomfield
Grove Street., Montclair

Glenfield Park

Maple Ave. & Woodland Ave.
Montclair

Grover Cleveland Park

Brookside Ave. & Runnymede Road
Essex Fells

Independence Park

Van Buren Street & Walnut Street
Newark

Irvington Park

Grove Street & Lyons Ave.
Irvington

Ivy Hill Park

Mt. Vernon Place
Newark

Monte Irvin Orange Park

Center Street & Harrison Street
Orange

Kip's Castle Park

22 Crestmont Road
Verona

Presby Memorial Iris Gardens

474 Upper Mountain Ave.
Upper Montclair

Riverbank Park

Market Street & Somme Street
Newark

Riverfront Park

Raymond Boulevard & Brill Street
Newark



Vailsburg Park

South Orange Ave. & Oraton Parkway
Newark

Verona Park

Bloomfield Ave. & Lakeside Ave.
Verona

Veterans Memorial Park

West Market Street & Wickliffe Street
Newark

Watsessing Park

Bloomfield Ave., Bloomfield
Glenwood Ave., East Orange

Weequahic Park

Elizabeth Ave. & Meeker Ave.
Newark

West Side Park

So. 13th Street & 18th Ave.
Newark

Yanticaw Park

Centre Street & Park Drive
Nutley

RESERVATIONS

South Mountain Reservation

So. Orange Ave. & Cherry Lane
West Orange

Eagle Rock Reservation

Prospect Ave. & Eagle Rock Ave.
West Orange

Mills Reservation

Normal Ave. & Reservoir Drive
Cedar Grove

West Essex Park

Eagle Rock Ave. & Passaic River
Roseland

Hilltop Reservation

Fairview Ave.
Cedar Grove

FACILITIES

Codey Arena

560 Northfield Ave.
West Orange

Environmental Center

621-B Eagle Rock Ave.
Roseland

Riker Hill Art Park

284 Beaufort Ave.
Livingston

Paddle Boating

7 Cherry Hill Lane
West Orange

Treetop Adventure Course

560 Northfield Ave.
West Orange

Turtle Back Zoo

560 Northfield Ave.
West Orange

GOLF COURSES

Francis Byrne Golf Course

Pleasant Valley Way
West Orange

Hendricks Field Golf Course

220 Franklin Ave.
Belleville

Weequahic Park Golf Course

Elizabeth Ave. & Grumman Ave.
Newark